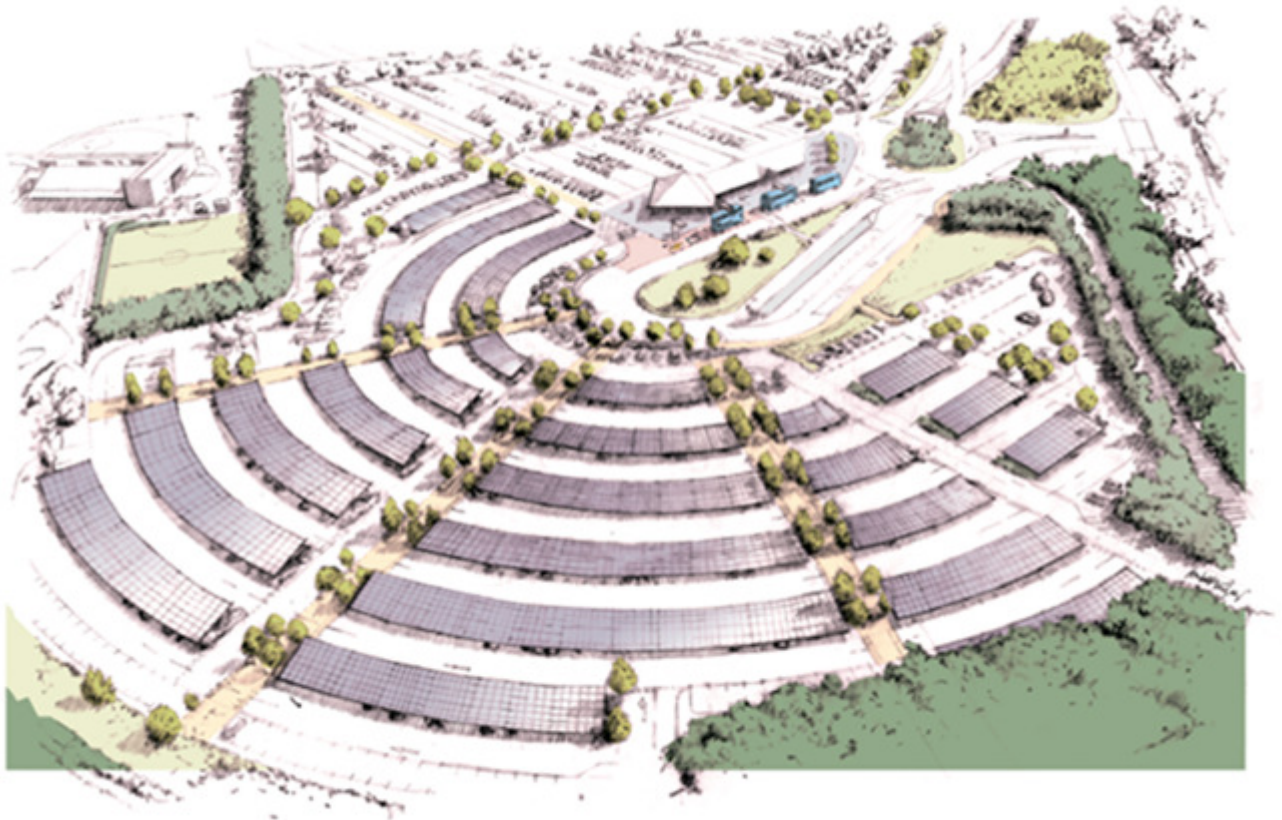


From: Gregoire Cherie
Sent: 22 March 2018 17:58
Subject: Clean energy project proposed for Trumpington P+R

Dear Jason –

I work in the energy investment team at the County Council, we invest in clean energy projects on our County-owned assets which can expand production of renewable energy and generate a profit for vital services. My team was responsible for building the 12 MW solar farm on our rural estate land in Soham.

We've just begun outreach on an energy project we're developing at the Trumpington Park and Ride. We're looking to build something called a smart energy grid. The project would consist of building carports over the majority of the parking spaces and mounting solar modules on the carports to generate electricity. The electricity would be fed into a battery storage system for distribution out to the site and for sale to local customers, such as John Lewis or Trumpington Meadows school. This is an artistic impression of what the project could look like.



View 01 of Trumpington Park & Ride if RT

We're developing the business case at the moment which will tell us about the cost and benefits of the project. If we proceed, we will seek planning permission in early 2019.

As part of that planning application we will conduct something called a Glint and Glare study, this assesses the amount, timing and location of solar glare to local residents, business and drivers. It essentially tracks the position of the sun against the angle of the panels to determine the resulting refraction of light. Homes border the northern section of the site and

as the solar panels will have a southerly aspect to collect the most sun, it's unlikely that there would be an issue for residents. However if there is, the study will recommend mitigation measures. Note local residents will be consulted by the planning authority prior to a planning decision.

As we'll be installing carports, we will also be relocating lighting columns and CCTV cameras to maintain security on the site. Some lighting columns will need to be removed as they cause shading of the panels, we will add under canopy lighting to compensate.

Do get in touch if you have any concerns or if you'd like the team to come present the concept to the Parish Council.

**Kind regards,
Cherie**

Cherie Gregoire

Special Projects Manager | Energy Investment Unit
Cambridgeshire County Council